

O Come, O Come, Emmanuel 154

Unison

Em Bm G Am Am G D G D Bm G C G

1 O come, O come, Em - man - u - el, and ran - som cap - tive
 2 O come, thou Day - spring, come and cheer our spir - its by thine
 3 O come, thou Wis - dom from on high, and or - der all things,
 4 O come, De - sire of na - tions, bind all peo - ples in one

Am Em Bm Em Am Am Em B7 Em Bm C D Em

Is - ra - el, that mourns in lone - ly ex - ile here, un -
 ad - vent here; dis - perse the gloom - y clouds of night, and
 far and nigh; to us the path of knowl - edge show, and
 heart and mind; bid en - vy, strife and quar - rels cease; fill

Refrain (Harmony)

D Bm G G Am Am G D G D Em Bm G

til the Son of God ap - pear.
 death's dark shad - ows put to flight.
 cause us in her ways to go. Re - joice! Re - joice! Em -
 the whole world with heav - en's peace.

Am Am G D Em D G G C G Am Em D Em

man - u - el shall come to thee, O Is - ra - el!

Used by Permission CCLI #1619690

We Light the Advent Candles 175

N.C. Eb Bb7 Eb Eb $\frac{Eb}{G}$ Fm7 Bb Eb

1 We light the Ad-vent can - dles a - gainst the win - ter night,
 2 The first one will re - mind us that Christ will soon re - turn.
 3 We light the sec - ond can - dle, and hear God's ho - ly Word,
 4 Three can - dles now are gleam - ing and show us the true way,
 5 Four can - dles burn - ing bright - ly an - nounce that Christ has come,

$\frac{Eb7}{G}$ Ab $\frac{Dm7(b5)}{Ab}$ $\frac{Eb}{G}$ Eb $\frac{Eb}{G}$ Fm7 Bb Bb7 Eb

to wel - come our Lord Je - sus who is the world's True Light,
 We light it in the dark - ness and watch it gleam and burn,
 it tells us, cling to Je - sus, pre - pare to meet your Lord,
 re - joice, the Bap - tist cries out, your Lord has come to - day,
 pre - pare, my heart, be - lieve it, and give the Christ child room,

$\frac{Eb7}{G}$ Ab $\frac{Dm7(b5)}{Ab}$ $\frac{Eb}{G}$ Eb $\frac{Eb}{G}$ Fm7 Bb7 Eb

to wel - come our Lord Je - sus who is the world's True Light.
 We light it in the dark - ness and watch it gleam and burn.
 it tells us, cling to Je - sus, pre - pare to meet your Lord!
 re - joice, the Bap - tist cries out, your Lord has come to - day!
 pre - pare, my heart, be - lieve it, and give the Christ child room.

Long Ago, Prophets Knew

N.C. Dm Am C F Dm $\frac{G}{B}$ $\frac{F}{A}$

1 Long a - go, proph-ets knew Christ would come,
 2 God in time, God in man, this is God's
 3 Ma - ry, hail! Though a - fraid, she be - lieved,
 4 Jour-ney ends! Where a - far Beth-lehem shines,

$\frac{Em}{G}$ $\frac{C}{E}$ F C F C $\frac{G}{B}$ Am Dm Bdim Em G Em Am Dm

born a Jew, come to make all things new, bear his peo-ple's bur - den,
 time-less plan: he will come, as a man, born him-self of wom - an,
 she o-beyed. In her womb, God is laid till the time ex - pect - ed,
 like a star, sta-ble door stands a - jar: un-born Son of Ma - ry,

8vb ----- 8vb-----

$\frac{Em}{G}$ F Em Am G *Refrain* C Dm C

free - ly love and par-don.
 God di - vine - ly hu - man. Ring, bells, ring, ring, ring! Sing, choirs, sing,
 nur-tured and pro - tect - ed.
 Sav - ior, do not tar - ry!

r.h. l.h.

(8vb)-----

F
C

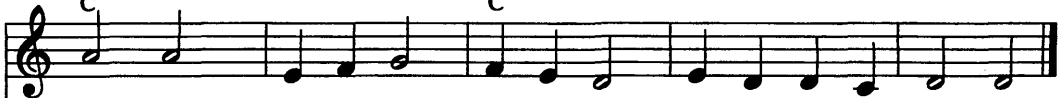
C

Dm
C

C

Asus Am

D



sing, sing! 1-3 When he comes, when he comes, who will make him wel-come?
4 Je - sus comes, Je - sus comes, we will make him wel-come!



(8vb) -----

198 Good Christian Friends, Rejoice

F B \flat F B \flat F B \flat C F B \flat F B \flat F B \flat F B \flat C

1 Good Chris-tian friends, re - joice with heart and soul and voice;
 2 Good Chris-tian friends, re - joice with heart and soul and voice;
 3 Good Chris-tian friends, re - joice with heart and soul and voice;

F A B \flat C C7 F C7 F Gm7 B \flat F C C7 F Gm F

give ye heed to what we say: Je - sus Christ is born to - day;
 now ye hear of end - less bliss; Je - sus Christ was born for this;
 now ye need not fear the grave; Je - sus Christ was born to save;

F A B \flat F A C7 G F C7 Dm F A Gm7 B \flat F C C7 F Gm F

ox and ass be - fore him bow, and he is in the man - ger now.
 he has o - pened heav - en's door, and we are blest for - ev - er - more.
 calls you one and calls you all to gain his ev - er - last - ing hall.

Dm F A7sus E A7 E Dm C F Dm Gm7 B \flat C F

Christ is born to - day! Christ is born to - day!
 Christ was born for this! Christ was born for this!
 Christ was born to save! Christ was born to save!

Used by Permission CCLI #1619690

WORDS: Latin carol, 14th c.; tr. John M. Neale (1818-1866), alt.
 MUSIC: German melody, 14th c.

IN DULCI JUBILO
 Irregular